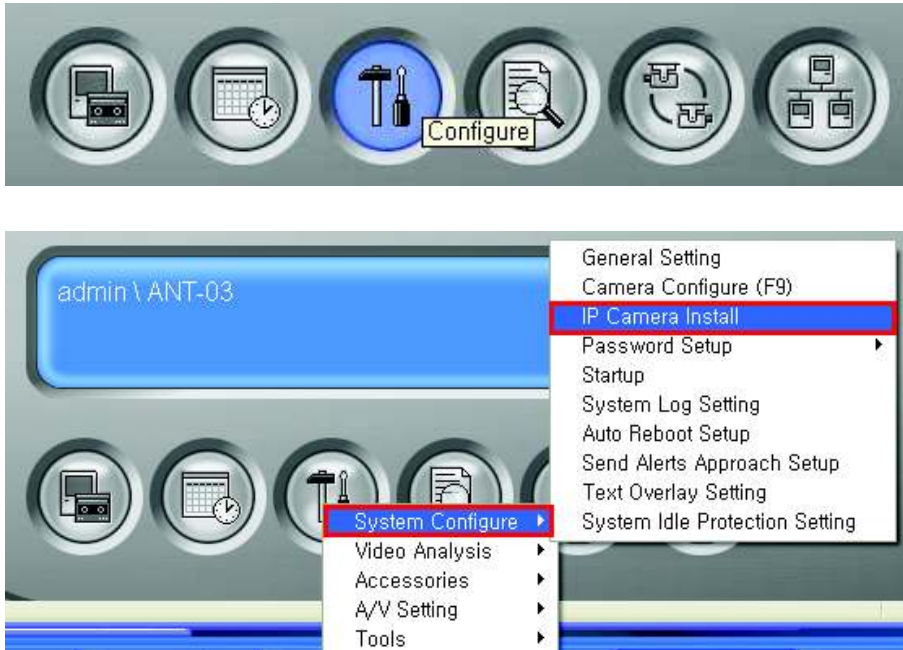


2. How to add camera on GeoVision GV-NVR via Onvif

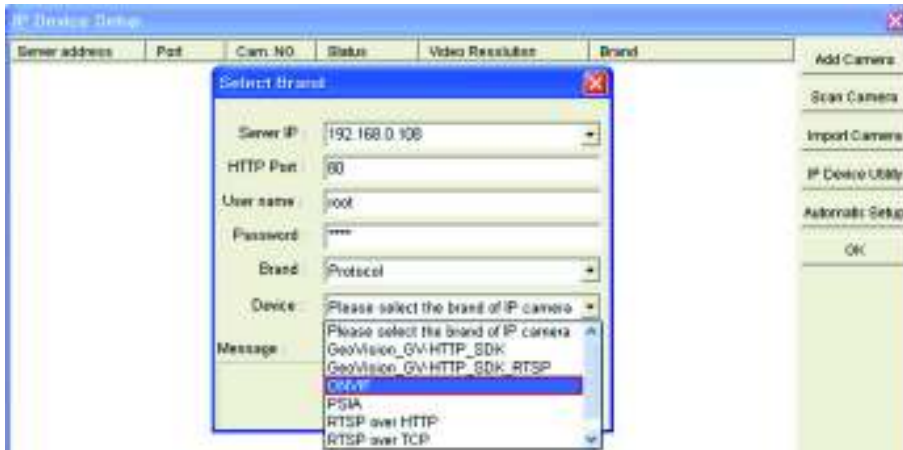
1. Run GV-NVR
2. Configure → System Configure → IP Camera Install



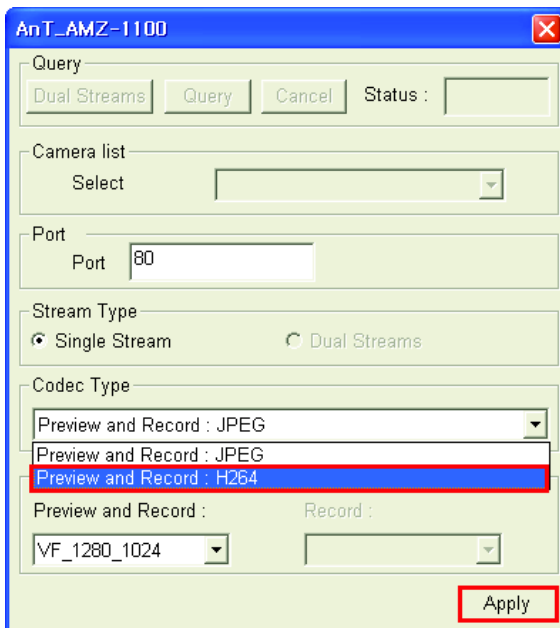
4. Click "Add Camera" on IP Device Setup page



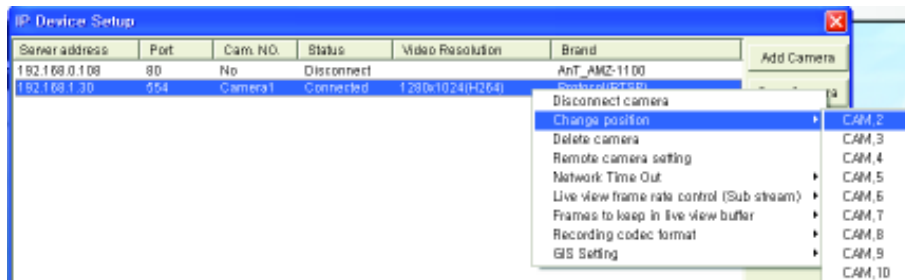
- On Select Brand window
 Enter Server IP, HTTP Port, User name, Password
 On Brand, choose Protocol
 On Device, choose ONVIF



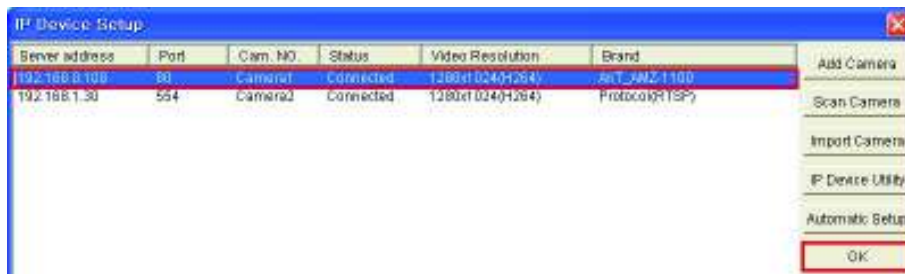
- Choose Codec and Click "Apply"



- After finding the camera, click the right button of mouse
Change position -> choose the camera position



- After confirming the camera, Click "OK"

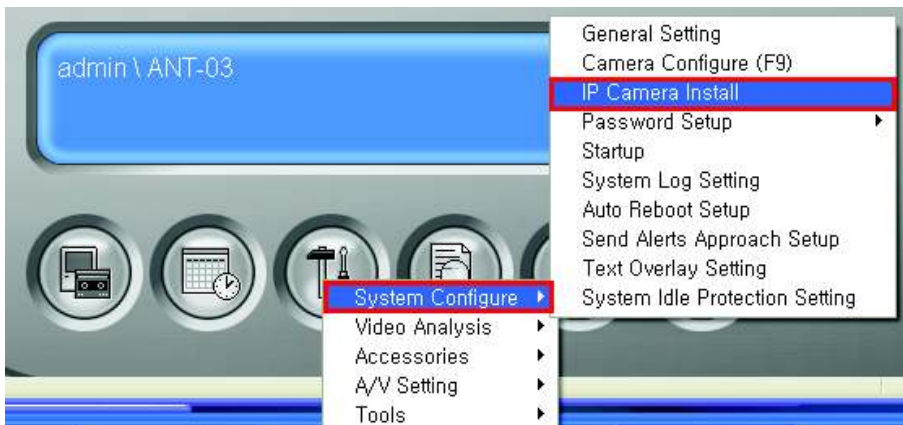


- Checking the picture

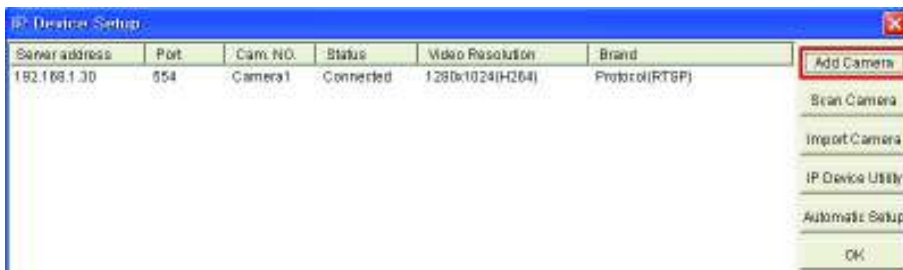


3. How to add camera on GeoVision GV-NVR via RTP/RTSP (RTP/TCP)

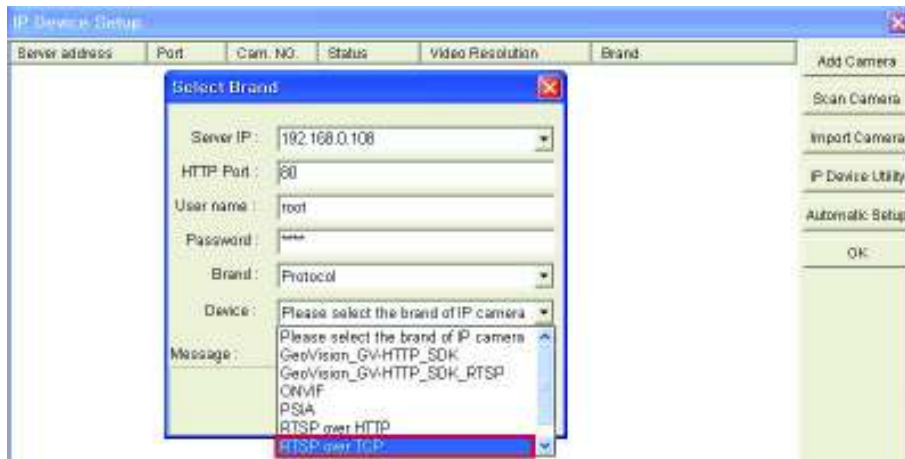
1. Run GV-NVR
2. Configure → System Configure → IP Camera Install



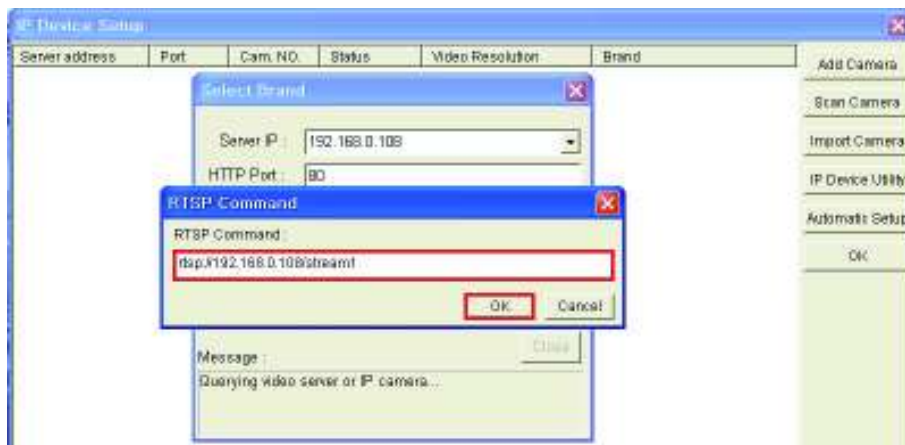
3. Choose "Add Camera" on IP Device Setup window



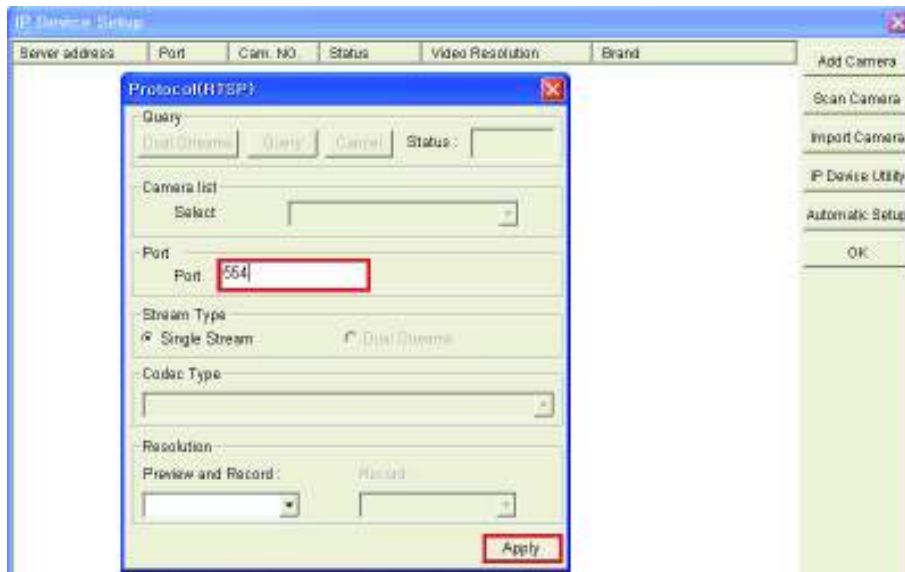
4. On Select Brand window
Enter Server IP, HTTP Port, User name, Password
On Brand, choose "Protocol"
On Device, choose "RTSP over TCP"



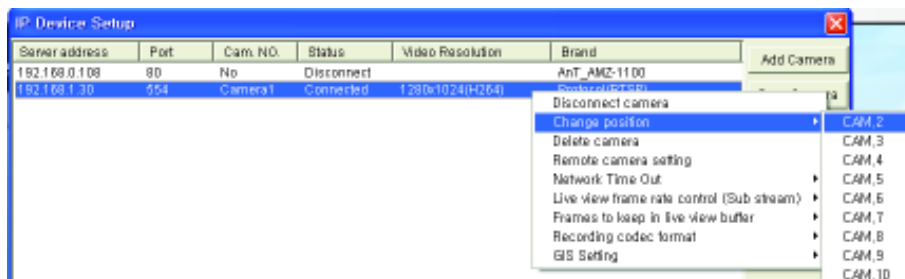
5. After entering RTSP command, Click OK



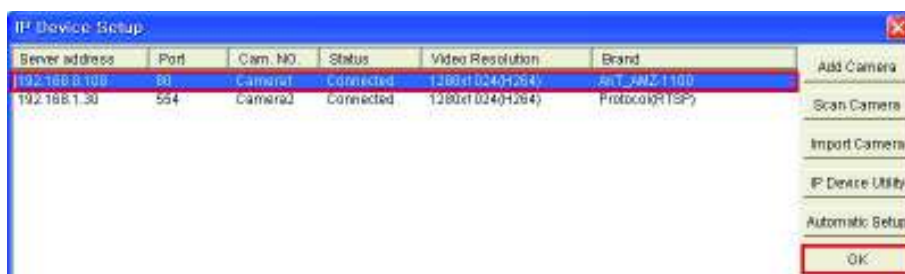
- After entering RTSP Port, Click "Apply"



- After finding the camera, click the right button of mouse
Change position → Choose the camera position



- After confirming the camera and click "OK"



9. Checking the picture

