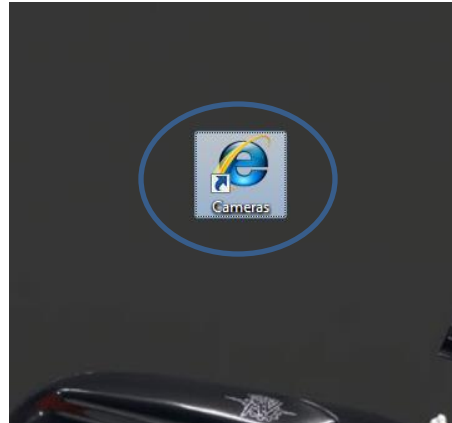
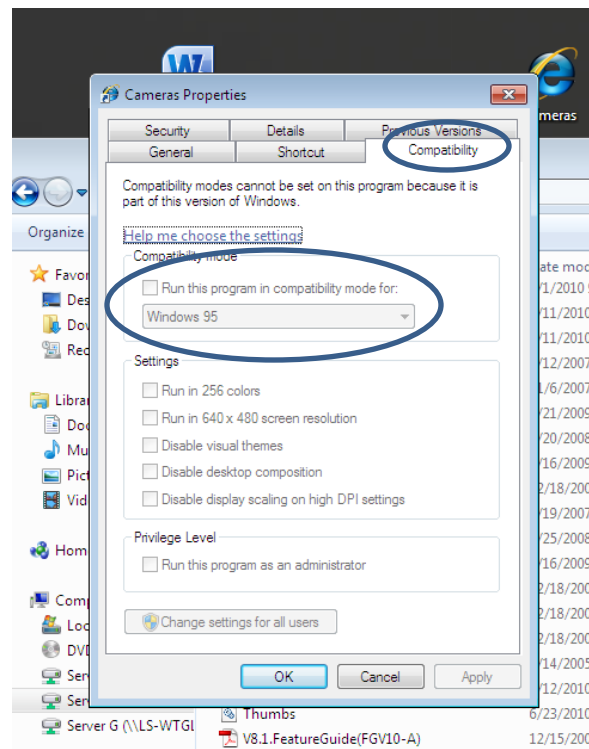


Windows XP /7/Vista 32 and 64-bit Webcam Setup

1. Create Internet explorer shortcut on desktop, rename to “Cameras”

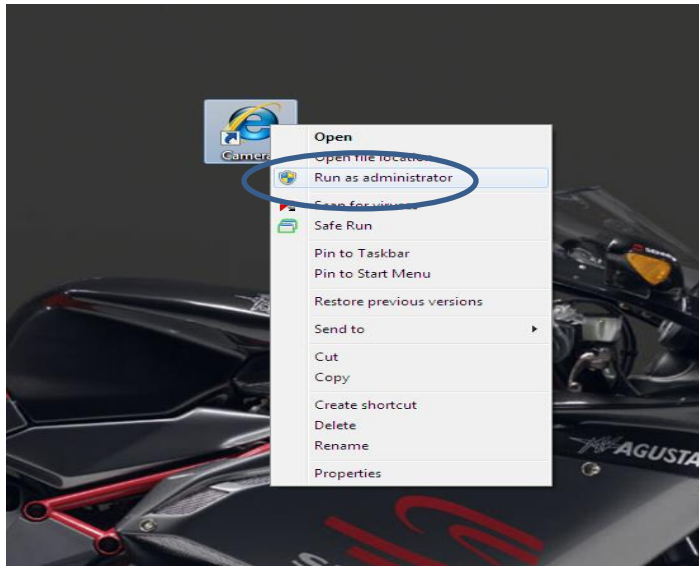


2. Right – click Cameras shortcut and select properties.
3. Select the “Compatibility” Tab
4. Tick “Run this program in compatibility mode” and select 32-bit

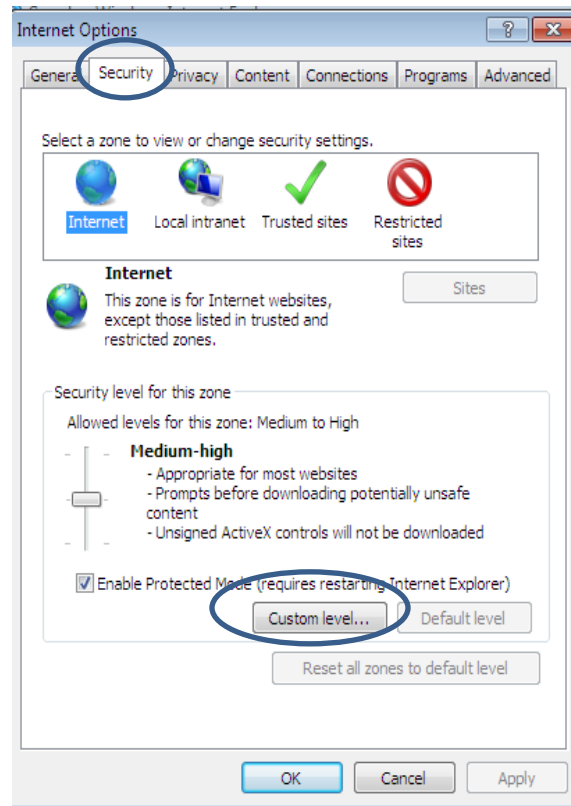


5. Click “OK”

6. Right-click Camera shortcut and select "Run as Administrator"

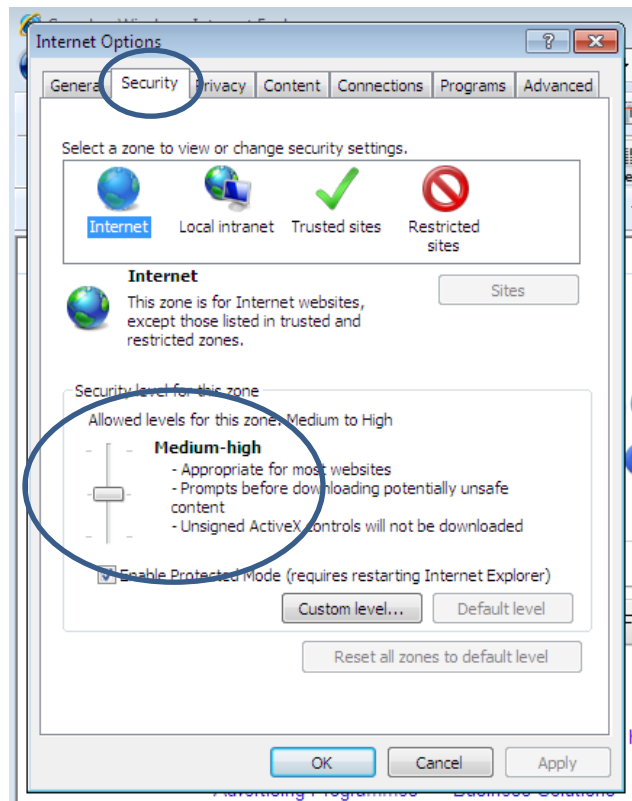


7. Go to "Tools" menu and select "Internet Options"
8. Select the "Security" tab and click on "Custom Level"



9. Enable ALL Active X features

10. Follow standard setup procedures
11. Go to "Internet Options"
12. Select "Security" tab
13. Set security level to "Medium-High"
14. Click "OK"



15. **Step 1.**
Type in IP address in the red circle into your Internet explorer window You may be asked to download a small file from Geovision, please say yes.
60.241.178.108
- Step 2.**
Click the submit button



16. **Step 3.**

If you have broadband Internet like ADSL, cable or ISDN, choose that option. If you have 56K modem, please choose modem.

Step 4.

Select Multiview. Click submit to continue.



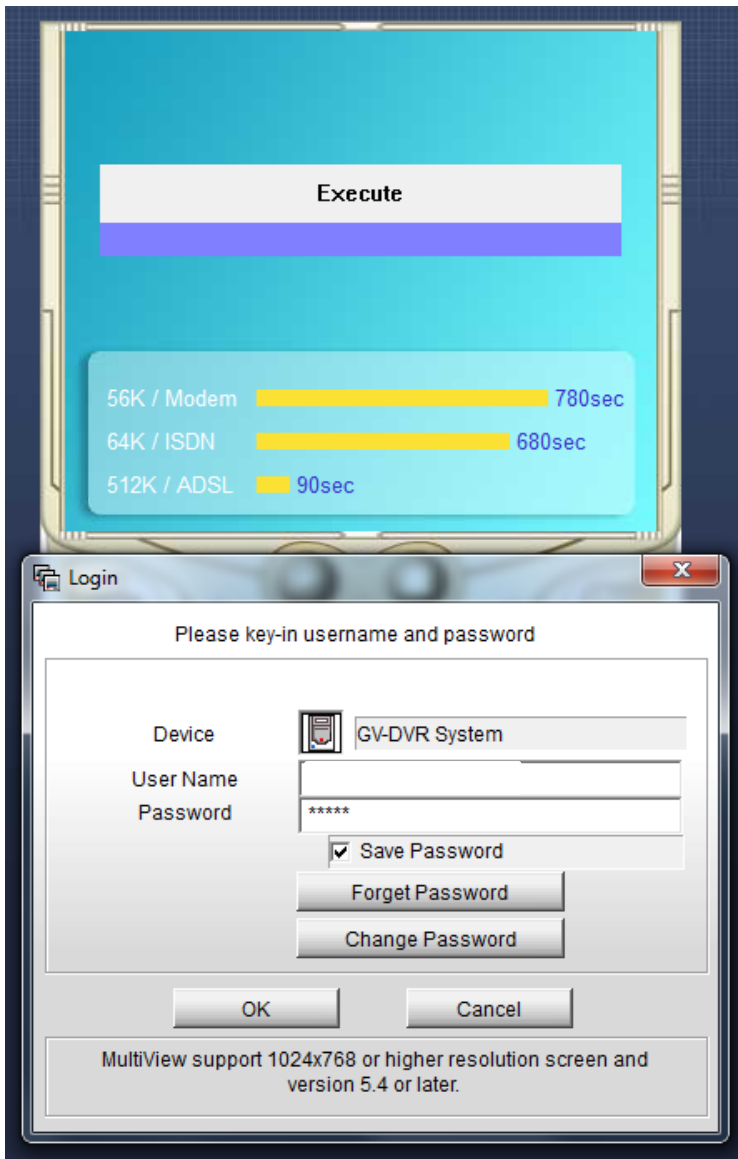
17. **Step 5.**

Press Play, then enter the user name and password

Username: austral

Password: 1234

Remember that these are case sensitive



18. The images will slowly load up. Select optimal screen layout

19. Allow Internet explorer to 'Fix Settings' once connected

For further support, call 1300 130 508