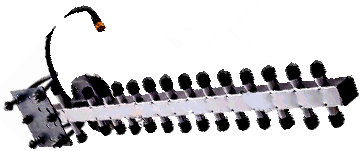


Sample System Design - 2.4GHz

Long Range Wireless Link, Point to Point (P2P)

Yagi8
Directional High Gain (8dBi)
Yagi Antenna
Inc. 1.5m Cable \$129 RRP

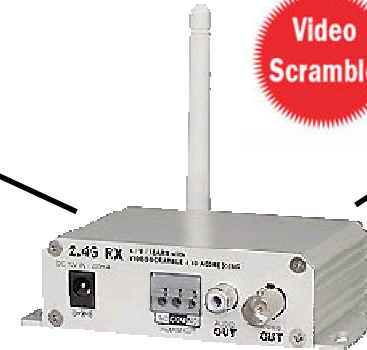


Yagi8
Directional High Gain (8dBi)
Yagi Antenna
Inc. 1.5m Cable \$129 RRP



Range
Up to 2000m line of sight
(Video Signal Scrambled)

Rx021000SC Receiver
connected to AV input
of TV \$179 RRP



Any TV / Monitor



Recording End



Total Indicative Cost \$786



Tx1000SC Hi Power Transmitter
(1000mW) Accepts AV input from any
analogue camera RRP \$349
(Note: Not ACA approved so should not
be used in Australia)
\$349 RRP



ANY CAMERA

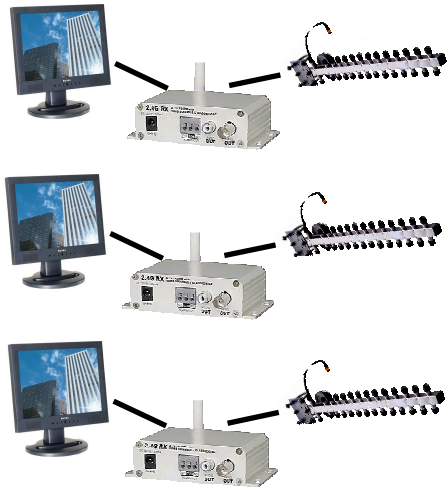


Problem Area

Sample System Design - 2.4GHz

Long Range Wireless Link, Point to Multi-Point (P2MP)

Monitoring Ends 2-4

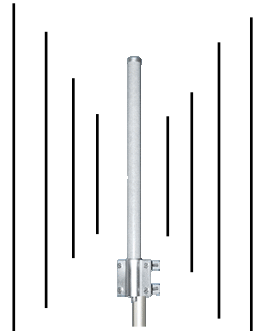


Extra Monitoring End, \$308 Indicative



Monitoring Ends

Omni-240012
Omni-Directional High Gain
(12dBi) Antenna
Inc. 1.5m Cable \$238 RRP



Yagi8
Directional High Gain (8dBi)
Yagi Antenna
Inc. 1.5m Cable \$129 RRP



Range
Up to
1000m line

Rx021000SC Receiver
connected to AV input
of TV \$179 RRP



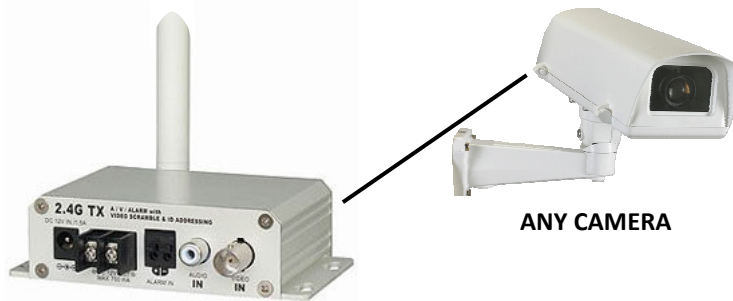
Any TV / Monitor



Monitoring End 1

Video
Scramble

Base System, Total Indicative Cost \$895



ANY CAMERA

Tx1000SC Hi Power Transmitter
(1000mW) Accepts AV input from any
analogue camera RRP \$349
(Note: Not ACA approved so should not
be used in Australia)
\$349 RRP



Problem Area