

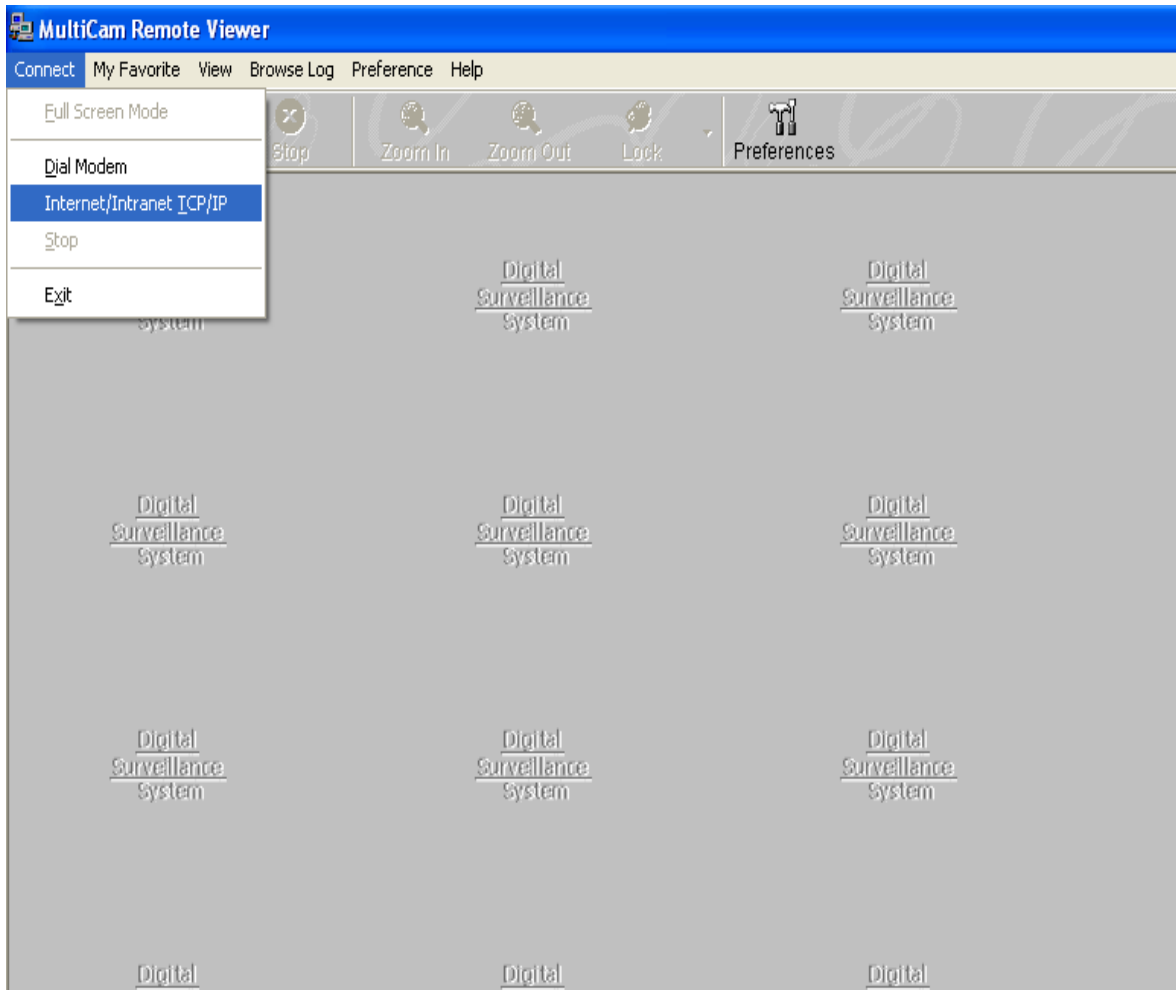


42 BOTANY RD ALEXANDRIA
NSW 2015, SYDNEY AUSTRALIA
PHONE: 1300 130 508 FAX: 02 9698 5476
www.australsurveillance.com.au
sales@australsurveillance.com.au
ABN 85 388 051 001
MASTER SECURITY LICENCE No. 408916063

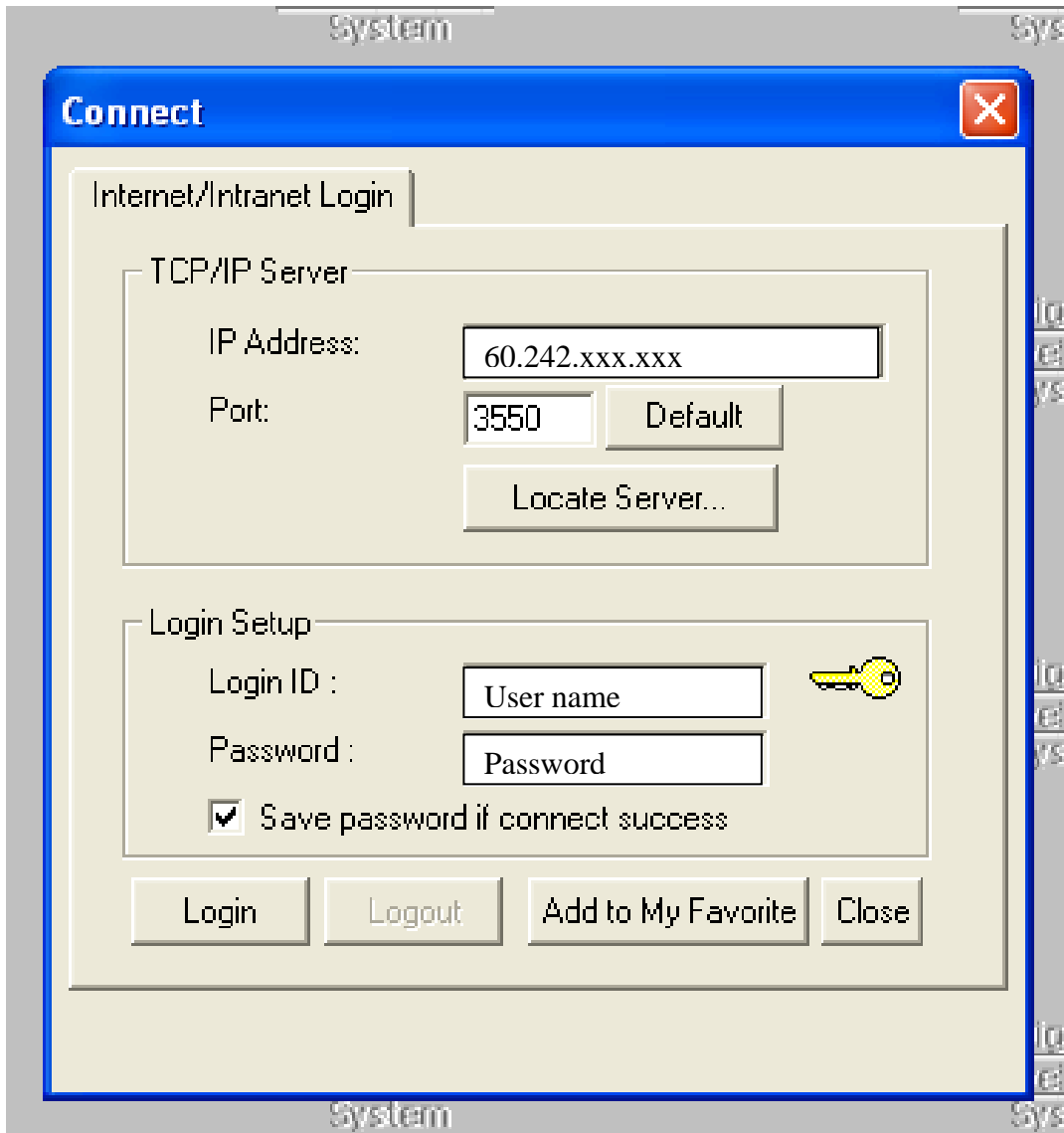
Geovision GV System

Remote View User Guide

1. Select Connect -> Internet/Intranet TCP/IP



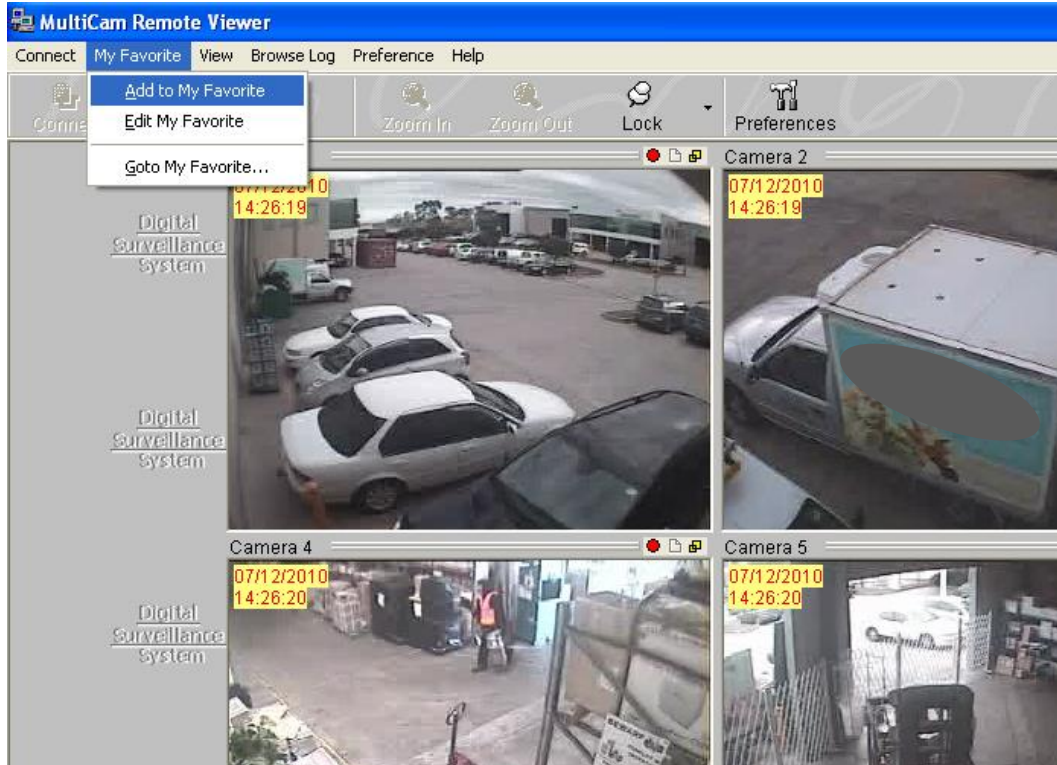
2. Enter IP address, User Name, Password. Then tick “Save if Password Success



The image shows a screenshot of a 'Connect' dialog box. The dialog box has a blue title bar with the text 'Connect' and a red close button. Below the title bar, there is a tab labeled 'Internet/Intranet Login'. The main content area is divided into two sections: 'TCP/IP Server' and 'Login Setup'. In the 'TCP/IP Server' section, there is a text box for 'IP Address' containing '60.242.xxx.xxx', a text box for 'Port' containing '3550', a 'Default' button, and a 'Locate Server...' button. In the 'Login Setup' section, there is a text box for 'Login ID' containing 'User name', a text box for 'Password' containing 'Password', and a checked checkbox labeled 'Save password if connect success'. At the bottom of the dialog box, there are four buttons: 'Login', 'Logout', 'Add to My Favorite', and 'Close'. The dialog box is overlaid on a background window titled 'system'.

3. Click Login

4. Once cameras are online, Select My Favourite and click “Add to Favourites”



5. Enter a name for connection and click “OK”

