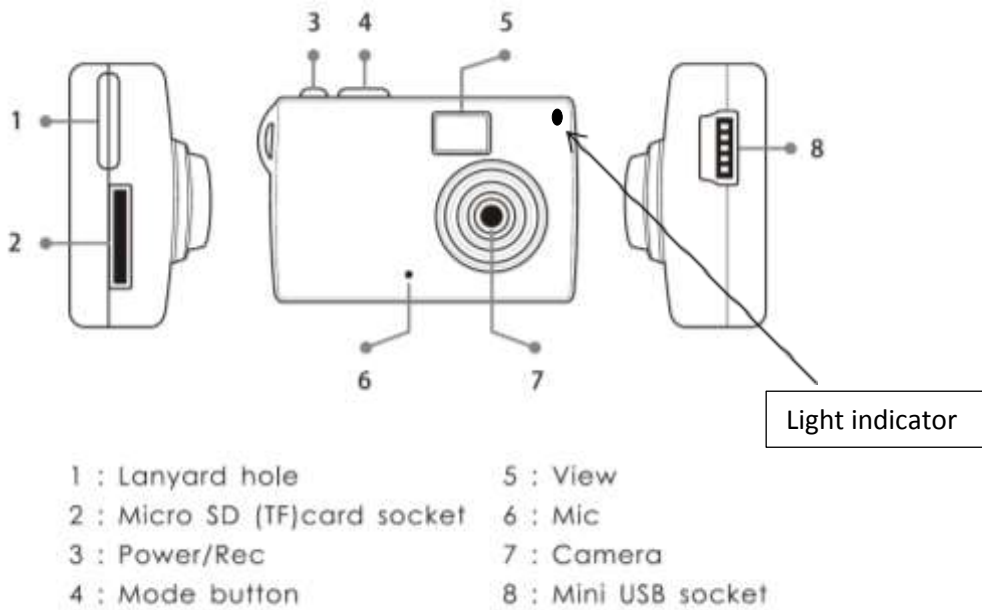


Mini DVR Cam



PARTS DESCRIPTION

a) Light indicator:



Red light means device is switched on in video mode and ready to use.



Blue light after switching on means device is starting up. If light is constant then photo mode is on.



Pink light means device is in sound recording mode.

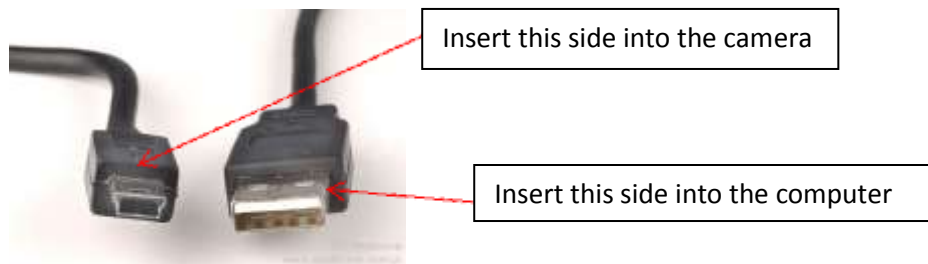
b) Micro SD Card socket: Insert the micro SD card (4Gb included) into the socket.



Insert micro SD card this way with the front of the camera towards

c) Power Button: Press to turn device on and off as well as starting and stopping video and sound recording.

d) USB Socket: Connect the USB cable provided to charge device from your computer and also transfer data.



e) Microphone and Camera: The microphone is used to capture sound; the camera is used to capture images.

OPERATION

- a) On/Off: Press button to start device, the blue light will be visible which means it's starting up, once it's ready to use the light will go red (this takes about 3-5 seconds). Default mode is video recording.
To switch device off, press and hold on/off button for 5 seconds, the lights will go off and any footage recorded will automatically be saved.
Note: any buttons pressed during start-up will not respond.
- b) Mode:
- The default is video mode, make sure light is red which means the device is ready to use then press the on/off button once to start recording. You'll know it's recording when the red light 'blinks' slowly. To stop recording, press the on/off button once again.
Note: the device will automatically save footage every 30 minutes whilst continually recording. Also, the motion detect in video mode requires the most optimal light settings to work effectively so it's advised that you don't rely on it for acquiring footage.
 - Press the mode button once to get into photo mode, the blue light will come on which means it's ready to capture image. Press the on/off button once and the blue light will go off for about 4 seconds then return; this means a photo has been successfully taken.
Note: for the best photo results ensure adequate lighting and that there are no obstructions to the camera. Also, aim to keep a distance of at least 50cm between the device and photo subject.
 - Press the mode button again to get into sound mode, this time a pink light will come on which means it's ready to record. Press the on/off button once to record sound, the light will stay constant during recording, press on/off again to stop sound recording.
- In Summary: default mode – video record, press mode once – photo mode, press mode twice – sound mode, press mode 3 times – back to default mode.**
- To access webcam mode connect the camera to your computer via the USB cable supplied ensuring the device is switched on then wait for your computer to recognize that the camera has been connected. If it doesn't, use the CD also provided to install the driver necessary for this feature to work. If the computer fails to recognize the camera, disconnect and reconnect the USB.

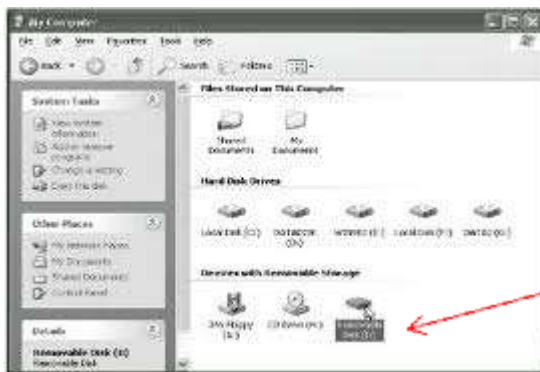
- c) **Connecting to the computer:** when the device is switched off or on standby (constant red light) connect the USB cable to the computer. When the computer has recognized the camera a box will come up on screen asking how you would like to proceed. Please be patient when waiting for device to be recognized by computer as it takes time depending on the type of computer you're using. If it takes too long, disconnect and reconnect the device which should work.

Note: pressing buttons on the camera whilst it's attempting to connect may damage or interfere with the connection.



Select option to open files in a folder

If this box doesn't come up, left double-click on My Computer (on the front page of the computer or Start > My Computer) and there should be a section for 'Devices with Removable Storage'



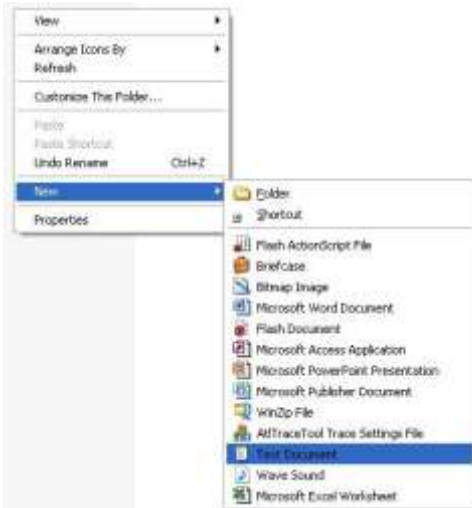
Select the camera drive. If you're not sure which to choose, left double-click on one at a time until you find a folder named _REC which contains a folder named 100MEDIA. This is where your recorded footage is saved.

While the footage is transferring from the device to the computer, the blue light will flash rapidly.

- d) **Charging:** when in charge mode the red light will be flashing, once it's finished the light will be constant.

Note: to ensure the camera is charging to its maximum capacity, for the first 5 charges, leave it connected for up to an hour after it's fully charged (the light is constantly red).

- e) **Setup Time/Date:** when the device is connected to the computer and switched off, go to the first folder for **Removable Disk Drive** e.g (E:\) or (F:\), then left click once on **File** at the top left hand side of the screen and left click once on **New** then **Text Document** (see picture below for rough idea).



In the text document enter the date and time in the following format altering it to the current date and time:




2012.02.27 16:30:00 Y (this means you want the date and time to be shown on footage, if you don't want it to, put N instead)

Once you've done this, left click once on **File** then **Save** or **Save As** and name the document 'Time', then left click once on **OK** to complete saving procedure.

To disconnect the device, right click once on the **Removable Disk** Icon then left click once on **Eject** as shown in below image.



Alternatively, at the bottom right hand of the screen to the left of the clock there should

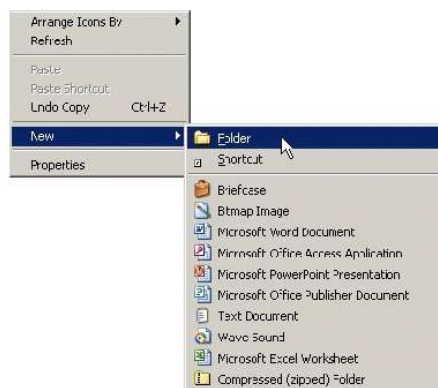
be an icon like this  or this . Right click once on it and this  message will come up.

Left click once on the message and this will come up



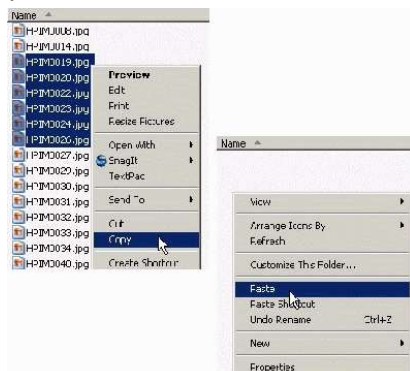
Select the option available, if there's more than one, left double-click to see what each is, then on the appropriate one left click once on **OK** and left click once on **Stop**.

- f) **Troubleshooting:** when the storage space has run out the blue and red lights will flash alternately for about 5 seconds before automatically saving footage and switching off. To maximize space, connect the camera to your computer (as shown in previous steps) and remove the footage from the device and put it in another location. To do this, when the camera is connected, find the folder you want to put the footage in or create one the same way you did the text document, instead clicking on **Folder** as



shown.

Once the folder has been created, go back to the folder where all the footage is saved and left click once on the first file so it 'lights up' a certain colour, press and hold **CTRL** and continue to left click once on each file (making sure it lights up the same colour) that you want to move to the new folder you've created.



If you click on Copy instead of Cut as shown in the image, once you've pasted the files into the new folder, go back to the first folder where the footage was and delete the files from there. If they're still highlighted, just press the delete button on your keyboard or right click once on any file and left click once on delete.

When you've selected everything, let go of **CTRL**, right click once on one of the files, then left click once on **Cut**. Open the folder you want to move them to and right click once anywhere in the folder, left click once on **Paste** and all the files should show up once they've finishing transferring.

g) Product Specifications:

Lens	High-end quality lens
View range	60 degree
Photo format	JPG
Photo resolution	500 Mega pixels , 2560 x 1920 pixels
Photo pieces	1GB/ about 2100 pieces
Recording format	AVI
Video encoding	M-JPEG
Recording resolution	VGA,1280 x 960@30fps±1fps
Time setting	Yes/No(You can set free)
Image ratio	4:3
Recording time	Full power, about 85 min
Audio format	WAV
Sampling Rate	24kHz
Sound Recording Time	Full power, about 3 hours ; 1GB/12.34h
Web Cam	320 x 240
Supporting system	Windows me/2000/xp/2003/Vista ; Mac os 10.4 ; Linux ;

Transfer interface	Mini 5 Pin USB
Storage support	MicroSD (TF)
Battery type	high-capacity lithium polymer
Battery capacity	220mAh
Charging Voltage	DC-5V
Charging time	About 3 hours
Size	5mm(H) x 29mm(W) x 10mm(D)
Net Weight	14g

h) Warning:

The user takes full responsibility for this product and it is not to be used for illegal activities.

If you haven't used the camera in a long time, charge before use.

This is not a professional device and does not guarantee security or longevity of files or superior quality. It is advised that you frequently backup the device saving files elsewhere.

Optimal usage temperate is between 0-40°C and 20-80% humidity.

Avoid exposing camera to strong sunlight as it can damage the lens.

For cleaning purposes, avoid using device in dusty and wet areas as it is not waterproof.

Clean with a tissue or glasses cleaning cloth.

Avoid using product in areas with strong magnetic or electrical force as these may cause damage to it.