



42 BOTANY RD ALEXANDRIA
NSW 2015, SYDNEY AUSTRALIA
PHONE: 1300 130 508 FAX: 02 9698 5476
www.australsurveillance.com.au
sales@australsurveillance.com.au
ABN 85 388 051 001
MASTER SECURITY LICENCE No. 408916063

Geovision GV System

Configuration Manual Geovision GV600 and GV800 Systems *V5.4, v6.05, v6.11, v7.05*

©Austral Surveillance 1997 - 2009

OPERATING INSTRUCTIONS SUPPLEMENT

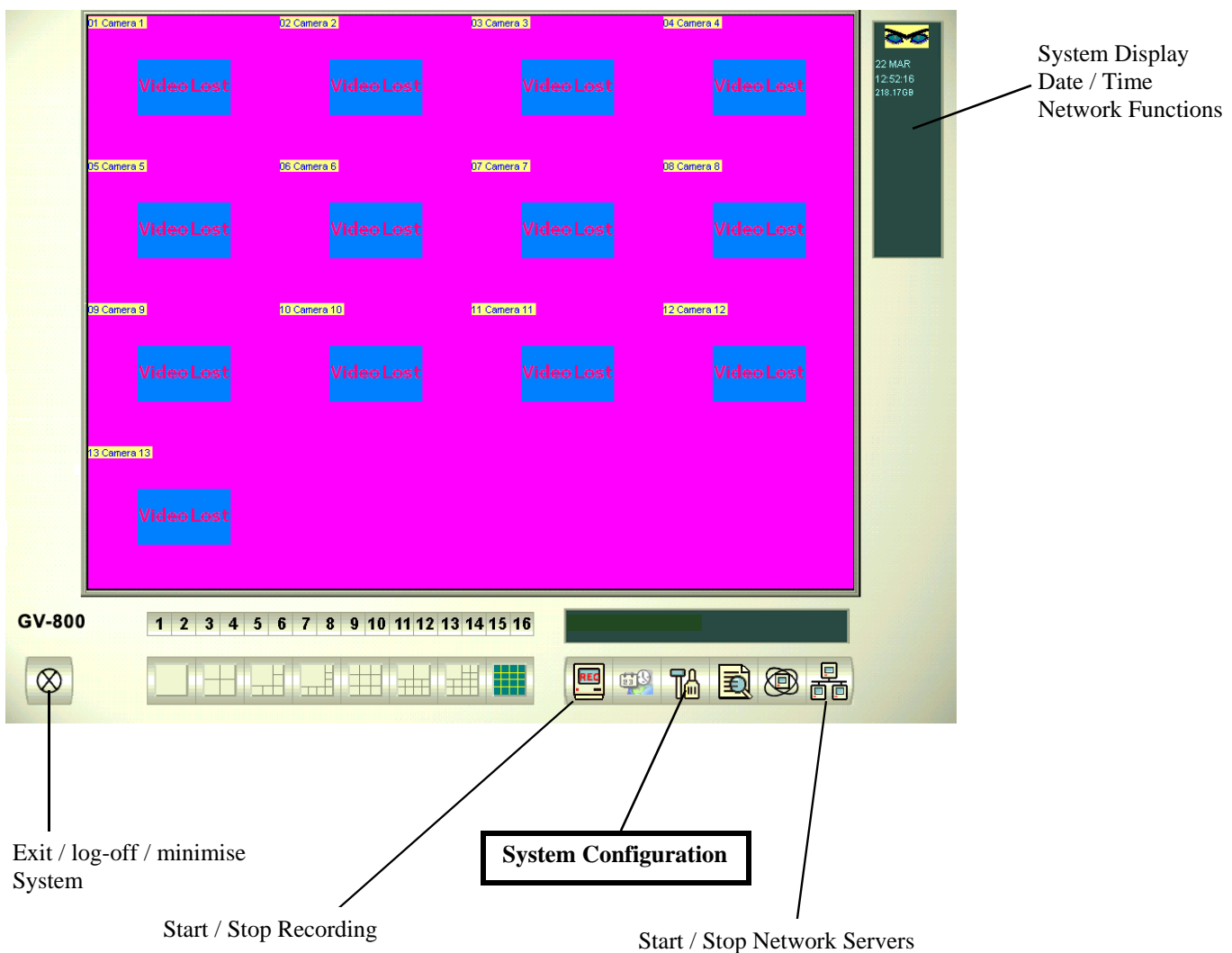
Multicam Technical Configuration

The purpose of this manual is to assist an installer with basic instructions relating to the configuration of a Geovision GV250, GV600 or GV800 system

This information presented in this manual is only ancillary and is to be read in conjunction with the Geovision Master manual available in soft copy on the CD provided

Prior to installation, please create a folder on your proposed surveillance drive, and call it “surveillance”

1. Main Screen Overview



OPERATING INSTRUCTIONS SUPPLIMENT

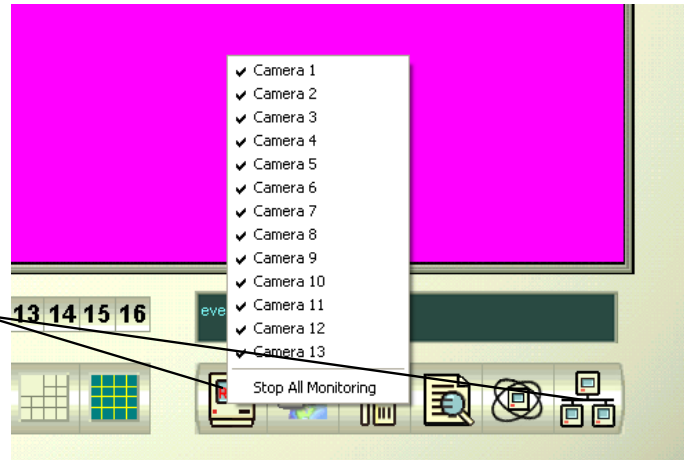
Multicam Technical Configuration

Continued.....

2. System Configuration

1A. To enter system configuration you must first:

a. Stop all monitoring and Network servers



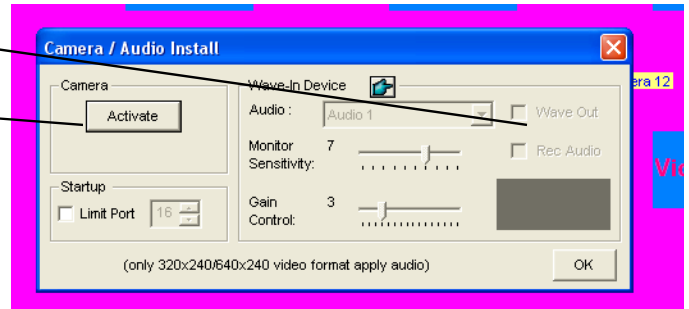
1B. Any unused cameras must be disabled otherwise

system may randomly reboot and to quit 'video lost'

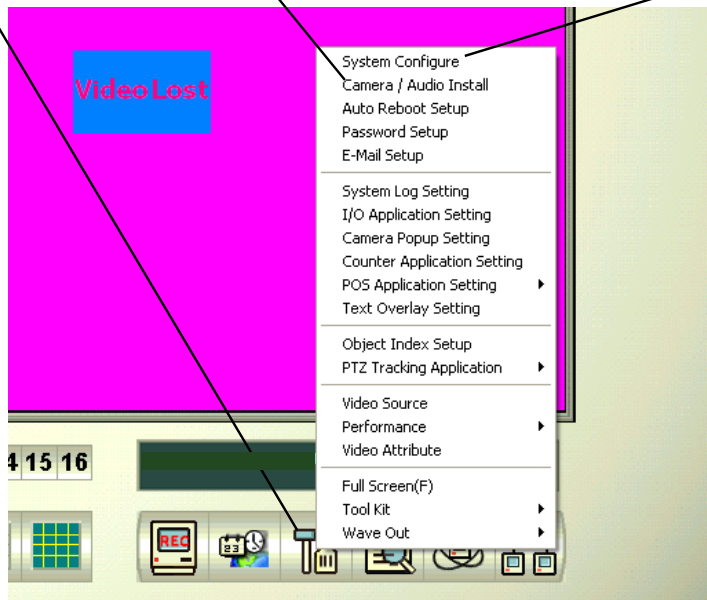
beeps. Click on the 'Screwdriver and Hammer' Icon, then select 'Camera / Audio Install'

Disable audio function if not used

Click 'Activate' and untick any unused cameras. Click OK when done



2. To Enter system configure, click on the 'Screwdriver and Hammer' Icon, then select 'System Configure'



OPERATING INSTRUCTIONS SUPPLIMENT

Multicam Technical Configuration Continued.....

2. System Configuration Continued...

3. Ensure all these boxes are ticked.

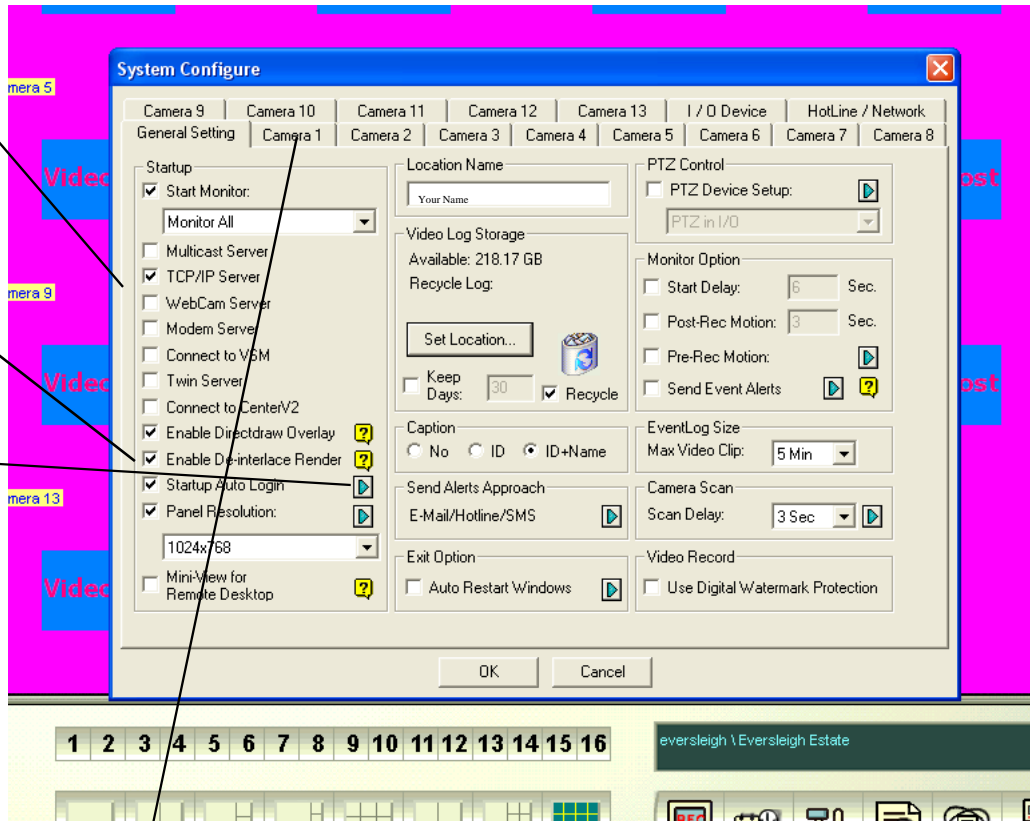
-Start all monitor ensures the system starts to record as soon as the software loads

-TCP server enables remote view as soon as the software loads

-These settings enable a higher resolution mode

You will need at least 128MB of graphics card support to run these resolution settings

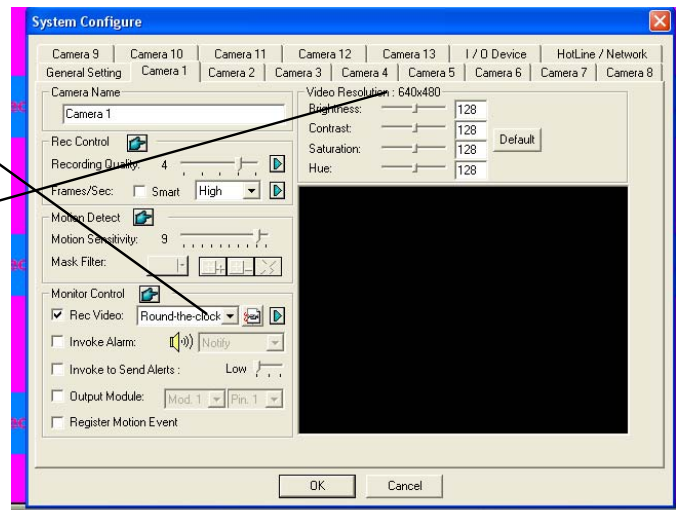
-Click here and enable 'Autologin'. You will need to enter your username and password than click for full screen mode.



4. Individual Camera configuration, click here.

Ensure that 'Round-the-clock' is selected here
Camera name, contrast, colour etc. can also be adjusted here. You must individually configure each camera
When finished click OK

You can specify individual cameras to record up to 720 x 548 here



OPERATING INSTRUCTIONS SUPPLIMENT

Multicam Technical Configuration

Continued.....

2. System Configuration Continued...

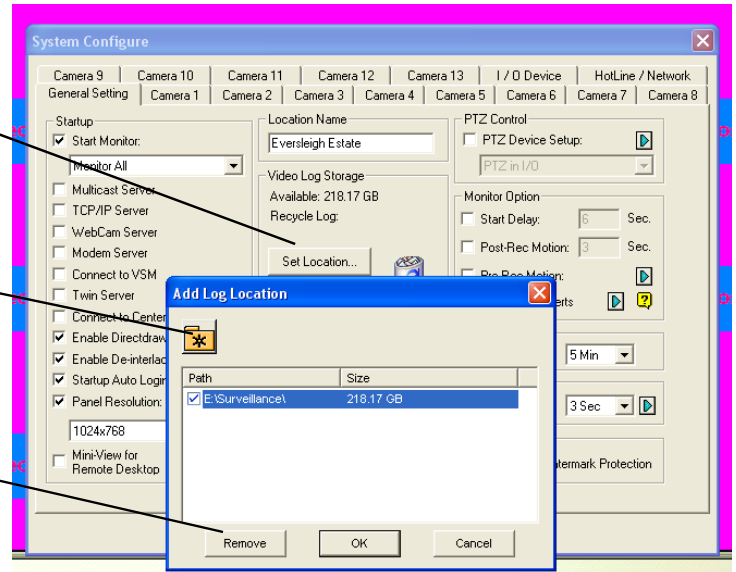
5. It is recommended that a large hard drive be separated into two logical drives, a smaller C drive of about 20GB, and a larger recording drive, say E drive. This will ensure that the larger drives fragmentation will not affect the operating systems drive

To Configure, click on 'Set Location'

By Default, the C Drive location will be displayed
Click Add
Select a folder in large drive called e.g. Surveillance.
It should now be displayed with the C Drive

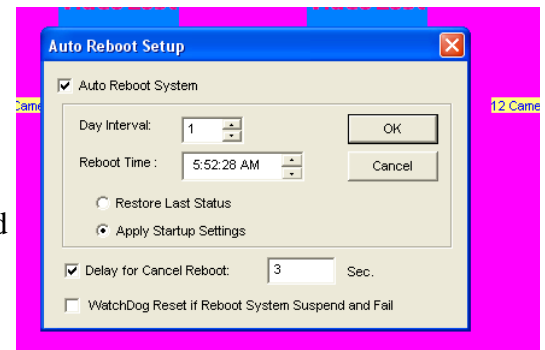
Highlight C Drive partition
Click remove

Now the system will only record on the large drive



3. Auto System Reboot

To improve the stability of MS Windows, it is recommended that Auto-reboot be set to a daily interval. This should be set to an early morning time. This feature will automatically reboot the PC at the nominated time, the surveillance system will then automatically engage and start rerecording. To enable, click on the 'Screwdriver and Hammer' Icon, then select 'auto reboot setup'



4. Resolution

v6.11 of the software can support up to 640 x 480 recording.
Version 7.05 beyond will record up to 720 x 548.
The system will default to 320 x 288 recording.
If a Pentium 4 processor is being used, 640 x 480 or greater can be selected

Click on the 'Screwdriver and Hammer' Icon, then select 'Video Source' Adjust Video Resolution

