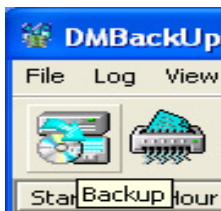
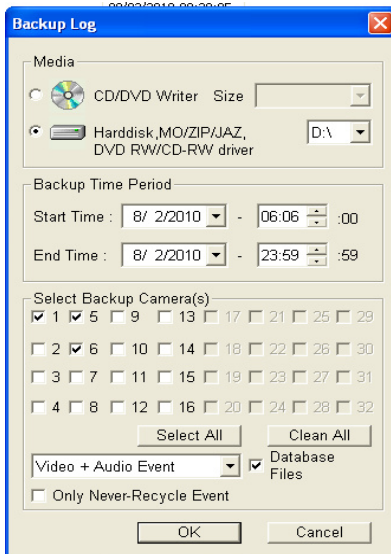


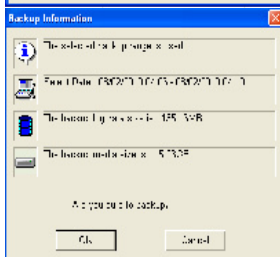
1. Select the START tab, click all programs, find the GV650 Folder or the current version of software which you have installed e.g. GV700. Click that and it will bring up a list of GV related tabs. Click GeoVision Back up System.



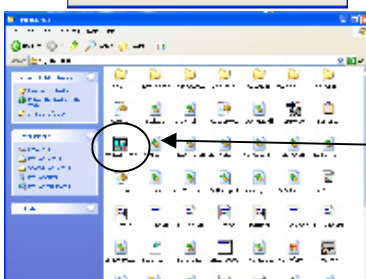
2. This will bring up the DM backup system program. To back up footage click Backup in the top left hand corner.



3. The backup log will now appear. Select whether backing up onto CD/DVD or one of your internal or a external drive e.g. USB stick.
4. Select the dates and times to be backed up. Please note that the date time format is MONTH/DAY/YEAR.
5. Select which cameras you need backed up.
6. Ensure that Database Files is ticked (under Clean All).
7. Click OK after you've double checked all date / times, cameras etc.



9. The Backup information screen will come up displaying the backup information you have selected to be backed.
10. It will ask you Are you sure to backup Click OK.
11. The footage has now been saved to selected drive, CD/DVD which you selected.
12. Open the drive where the footage is saved and look for a folder with the SIBK followed by numbers e.g. SIBK100802 as the folder name, this is the folder where your footage has been stored.



13. Click on the EZViewlog500 to view footage. This will load viewer program
14. EZViewlog500 operates as per normal Viewlog viewing procedure. (Refer to Multicam Surveillance System user manual)